

# Model 660SJC

## TELESCOPIC BOOM LIFTS

### Performance

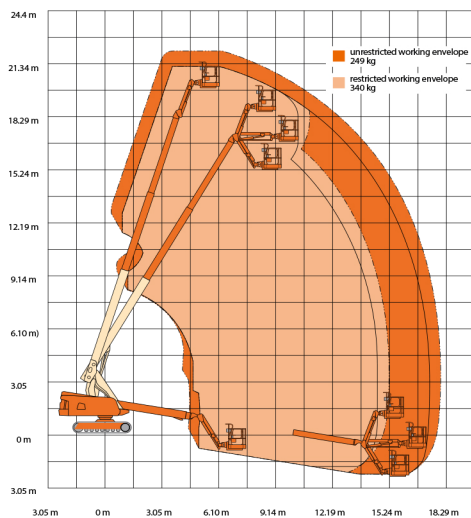
Working Height	21.99 m
Working Outreach	18.04 m
Swing (continuous)	360°
Platform Capacity – Unrestricted	🧑🧑 / 250 kg
Platform Capacity – Restricted	🧑🧑🧑 / 340 kg
Platform Rotator (hydraulic)	180°
Jib – Overall Length	1.83 m
Jib - Range of articulation	130° (+70°/-60°)
A. Platform Size	0.91 m x 1.83 m
B. Overall Width	2.49 m
C. Tailswing (working condition)	1.22 m
D. Stowed Height	2.50 m
E. Stowed Length	10.79 m
F. Wheelbase	2.76 m
G. Ground Clearance	0.42 m
Machine weight <sup>1</sup>	13,308 kg
Maximum Ground Bearing Pressure	TBC
Drive Speed	2.57 km/h
Gradeability	55%
Turning Radius	Zero
Type of Tracks <sup>2</sup>	Steel
Track Width	0.50 m

<sup>1</sup> Certain options or country standards may increase weight and/or dimensions.

<sup>2</sup> Optional detachable rubber pads available



### Reach Diagram



### Dimensions

