

MHT *Evolution*

THE HIGH CAPACITY HANDLING Solution

TECHNICAL DATA

NEW
SAIE 2011
INTERNATIONAL BUILDING EXHIBITION

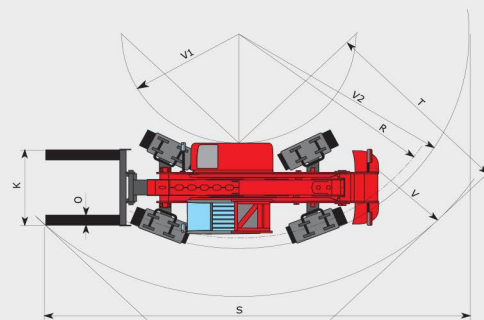
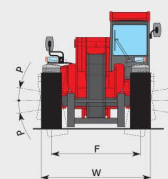
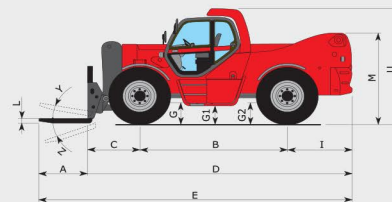


MHT 10180

MHT Evolution

MHT 10180

	Lifting capacity	
	CDG 600 mm	18000 kg
	CDG 900 mm	-
	CDG 1200 mm	14000 kg
	Lifting height	9.7 m
	Time: laden/unladen (in s)	
	Raise	25.00
	Lower	17.00
	Deploy telescope	14.00
	Tyres	445/95 R25 XLB
	Forks (mm)	
	Length x width x thickness	1500 x 200 x 80
	Braking	
	Service brake	multiple-disc brakes hydraulically assisted on front and rear axles
	Parking brake	negative
	MERCEDES MTU Engine	OM 904
	Capacity	4 cyl. - 4250 cm³
	Power at 2200 rpm (ISO/TR 14396)	175 HP/129 kW
	Max. torque at 1200 rpm - 1600 rpm	675 Nm
	Injection	direct
	Cooling	water
	Transmission	hydrostatic with automatic power regulation (hydraulic variable displacement pump and motor)
	Reversing shift	electromagnetic
	Number of gears (forward/reverse)	2/2
	Max. travel speed	25 km/h
	Rear axle	OMCI Heavy Duty (type stacker)
	Frame levelling	10°/10°
	Steering mode	4 wheel steer / 4 wheel drive 3 steering mode
	Hydraulics	
	Pump (Piston Load Sensing)	170 l/min - 350 bar
	Control	joysticks JSM (Joystick Switch and Move)
	Capacities	
	Cooling system	16 l
	Engine oil	16 l
	Hydraulic oil	200 l
	Fuel tank	200 l
	Unladen weight (with forks)	24080 kg
	Width overall	2.50 m
	Height overall	2.93 m
	Length (forks carriage)	6.60 m
	Ground clearance	0.45 m
	Drawbar pull	15500 daN

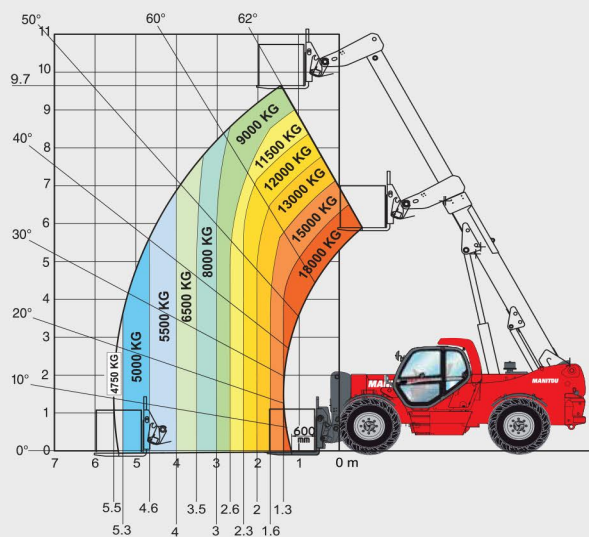


mm	MHT 10180
A	1500
B	3650
C	1335
D	6605
E	8105
F	2070
G	685
G1	445
G2	685
I	1620
K	1750
L	80
M	2300
O	200
P	10°
R	5445
S	10345
T	4255
U	2935
V	6810
V1	2870
V2	5685
W	2500
Y	12°
Z	105°

ROUGH TERRAIN LOAD CHART (UNDER EN 1459 ANNEXE B)

MHT 10180

CDG 600 MM



CDG 1200 MM

